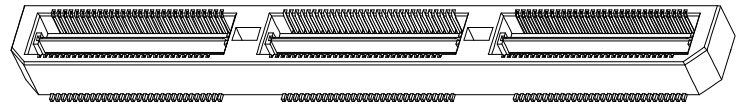
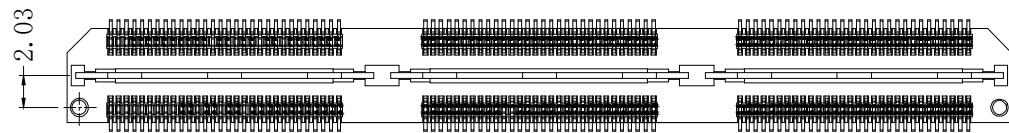
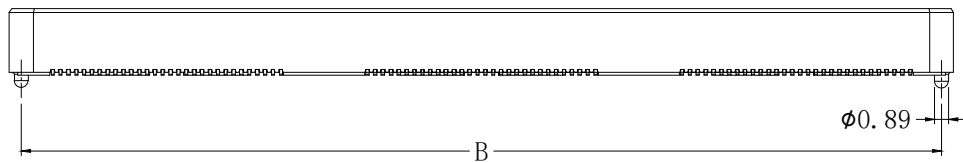
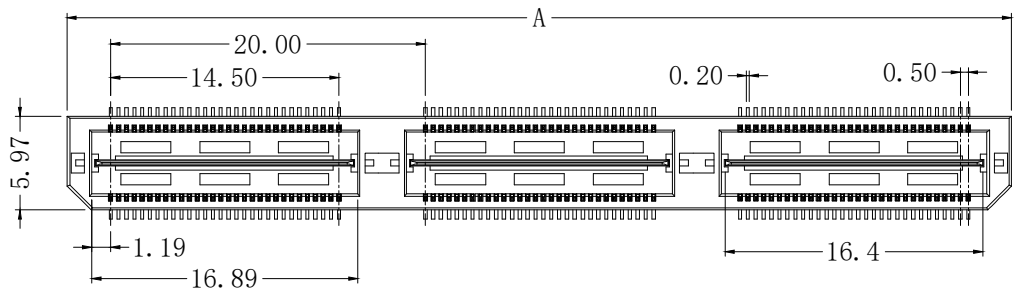
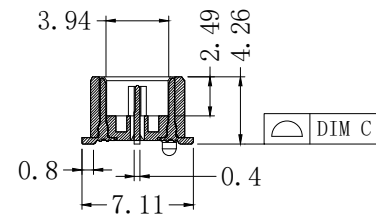


版次	变更内容	审核	日期

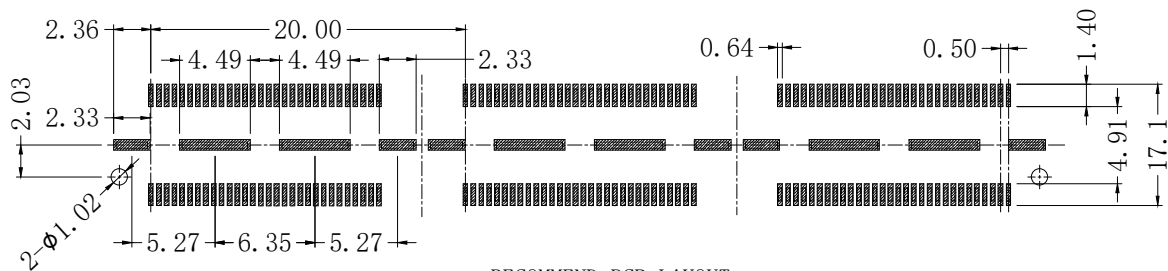


产品特性:

1. 绝缘体: LCP, UL 94V-0, 颜色: 黑色
2. 端子: 磷青铜
3. 电镀: 接触区镀金
4. 额定电流: 2 A (2个引脚供电)
5. 工作温度: -55° C TO +125° C
6. 额定电压: 175V AC



SECTION A-A



RECOMMEND PCB LAYOUT
TOLERANCE: ±0.05

QTH05-SM-2*xxP X

单排芯数:

接触电镀:

10G: GOLD 10u"
30G: GOLD 30u"

NO. OF contacts	Dimensions		
	A	B	C
2*30	20.00	18.48	0.10
2*60	40.00	38.48	0.10
2*90	60.00	58.48	0.15
2*120	80.00	78.48	0.15
2*150	100.00	98.48	0.15

公差:	版次:	A	上海宗进电子科技有限公司		
. X ±0.35	比例:		Shanghai Zong Jin Electron Technology Co.LTD		
. XX ±0.25	单位:	mm	型号:	QTH05-SM-2*xxPX	签名
. XXX ±2°	页码:	1/1	描述:	0.5mm BTB 高速接地插座	日期
LNLB	图号:		绘图:		
			确认:		
			审核:		